

Dartmouth North Association

Pathways Eligibility Project

Supplementary Report

Education Outcomes

April 2012

**PREPARED ON BEHALF OF THE PATHWAYS ELIGIBILITY PROJECT TEAM BY:
DENNIS PILKEY, CONSULTANT**

Tel: (902) 464-8877

E-mail: pilkeydw@eastlink.ca

Web: www.dennispilkey.ca

This and other blank pages are for two-sided printing purposes.

TABLE OF CONTENTS

1.	<i>INTRODUCTION</i>	1
2.	<i>DARTMOUTH NORTH SCHOOLS</i>	2
	2.1. Provincial Student Module	2
	2.2. Data Coding and Cleaning.....	3
	2.3. Data Highlights	4
	2.4. Source of Students	4
	2.5. Last Year Attended	4
	2.6. Dropout Rates	5
	2.7. Transferred Students	5
	2.8. Education Outcomes	6
	2.9. After Graduation.....	7
3.	<i>OBSERVATIONS</i>	8
4.	<i>APPENDIX A - DATA CODING AND CLEANING</i>	10
	4.1. Status and Future Plans.....	10
	4.2. Other Coding	11
5.	<i>APPENDIX B - SOURCE OF STUDENTS</i>	12
6.	<i>APPENDIX C - STUDENT STATUS</i>	13
7.	<i>APPENDIX D - LAST SCHOOL AND YEAR ATTENDED</i>	18
8.	<i>APPENDIX E - INTENTIONS AFTER GRADUATION</i>	19
9.	<i>APPENDIX F - STUDENT STATUS GRAPHS</i>	20

1. INTRODUCTION

The Dartmouth North Association (DNA) was established in February, 2011 with the purpose of coming together to celebrate and affect change to build a stronger, healthier community. The DNA consists of community members with a keen interest in making our community better. By identifying what is working in our community, bringing folks together to learn more about services and successes in our community, and then taking action to change things for the better, we believe Dartmouth North will become a community filled with pride and strong connections.

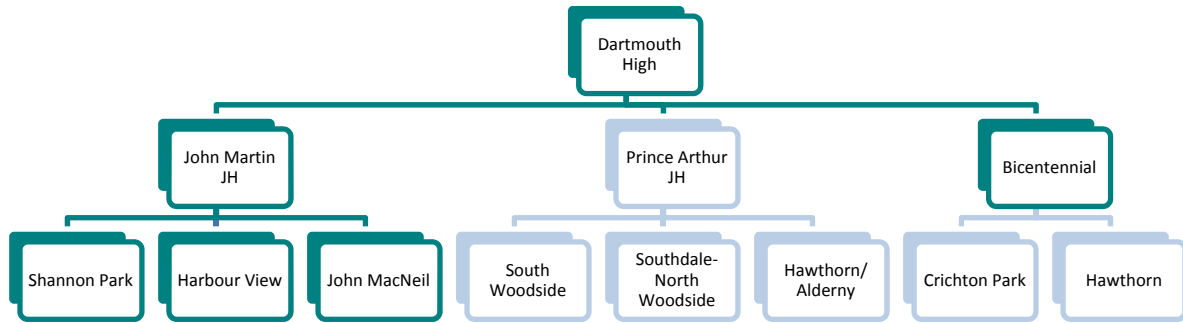
Education was identified by the DNA as an area for action; to learn more about our community and the current education experiences within Dartmouth North; and to expand and improve upon the education of our children, for today and into the future. The Department of Education, the Halifax Regional School Board and individual teachers are all working hard to keep our children in school. In spite of their best efforts, it seems that the young people of Dartmouth North are achieving at lower levels and are dropping out of school at greater rates than most other parts of Halifax.

This Supplementary Report - Education Outcomes is a follow-up to the [Pathways Eligibility Project Final Report](#) which provided a demographic context and a comparative perspective of the schools serving students from Dartmouth North. The project report presents a number of education indicators that showed that students from Dartmouth North are not achieving at the same level as other students in HRM. Graduation rates are lower, senior high school withdrawal rates are higher and the number of students believed to be dropping out, or at risk of dropping out, are at levels that cause concern. Based on the available information, it was not possible to calculate a direct dropout rate. However the data provided strong evidence that a large part of Dartmouth North has at least a 40% dropout rate.

Since the completion of the project report, the Nova Scotia Department of Education provided detailed information on all students attending John Martin and Bicentennial Junior High Schools between 2003-04 and 2008-09. Based on this data, it has been possible to determine more accurate dropout rates and look at the education outcomes of these students.

2. DARTMOUTH NORTH SCHOOLS

The Halifax Regional School Board has a system of families of schools. The Dartmouth Family is centred on Dartmouth High School.



The DNA is primarily interested in the students that are or have been part of the John Martin JH branch as shown above as well as those students from Dartmouth North that are attending Bicentennial Elementary and Junior High and Dartmouth High.

2.1. Provincial Student Module

In the mid 1990s, the Nova Scotia Department of Education initiated the development of the Provincial Student Module (PSM). Up to that point, the province kept only aggregate statistics on students. As noted in the *Departmental Working Paper on Dropout Related Indicators*¹ the number and rates of dropouts from the public education system were not known because of the lack of an individual student system that would enable the tracking of students, at least within Nova Scotia. Recently the Province has made a commitment to improve its central collection and record keeping of student information. In the meantime, the Provincial Student Module has continued to be maintained with the basic information started in the 1990s.

The Statistics and Data Management Division of Education is responsible for maintenance and data reporting from this system. While calculating dropout rates was one of several underlying principles in development of the PSM, this feature had not yet been pursued. It was determined that, subject to FOIPOP² limitations, it

¹ Nova Scotia Department of Education, *Departmental Working Paper on Dropout Related Indicators*, Statistics & Data Entry Section, Halifax, N.S. June 1993

² FOIPOP - Freedom of Information and Protection of Privacy. The Consultant signed a FOIPOP Research Agreement with the Department of Education that enabled the release of the information to the Consultant. Summary level data published in this report meets all requirements of the agreement.

would be possible to generate data that could be used by the consultant for purposes of the Pathways Eligibility Project. Based on a staff review of the core data, and with agreement of the consultant, the following was provided:

- all students who attended John Martin or Bicentennial Junior High Schools at any time from 2003-04 to 2008-09 were selected with the following information provided for each of these students -
 - Gender and school, grade and age as of first year recorded at either school
 - Last elementary school attended before entering junior high with year and age
 - Last school attended with year, age, leaving status, post-graduation plans

No information that could identify an individual student was included. 2003-04 was the earliest year for which information was available. Last school year attended was up to the current year (2011-12).

2.2. Data Coding and Cleaning

The Provincial Student Module (PSM) maintained by the Nova Scotia Department of Education was used to provide information for the 1,604 students who attended John Martin or Bicentennial Junior High Schools at any time from 2003-04 to 2008-09. The 2003-04 School Year was the first year for which useable historical data was available for both junior high schools. For this year, 387 out of 594 students registered in the two schools did not have a record of their prior elementary school.

As with any data reporting system, there can be incomplete, inconsistent, or incorrect reporting of some elements. This is especially true where record integrity depends upon a wide variety of people and working environments collecting and reporting the information over a period of time. For the above time period, reporting was at the school level and used a variety of systems to report to the PSM. In spite of this, the data was overall very good. For statistical analysis purposes, it is necessary to ensure that data is complete and is in a form that allows comparative statistical information to be generated. At the same time, it is imperative that the integrity of the overall data not be compromised.

Appendix A - Data Coding and Cleaning shows the approach that was taken to prepare the data for analysis purposes.

2.3. Data Highlights

- Between 2003-04 and 2008-09, 1604 students attended one or both of these two schools in grades 7 to 9
- The students came from at least 95 different elementary schools
- 474 students did not have their previous elementary school identified
- After leaving the Junior High Schools, they dispersed to 67 different schools
- 1,143 of the students went to Dartmouth High School
- 460 are still attending school
- 642 have graduated from high school.

2.4. Source of Students

The 1,604 students attending John Martin and Bicentennial Junior High came from over 95 elementary schools. Most of the students came from six schools within the Dartmouth family of schools. Four hundred of the 773 students attending John Martin came from Harbourview, John MacNeil and Shannon Park. Two hundred and thirty-five students did not have their elementary school recorded and the remaining 138 came from other elementary schools. Four hundred and sixty-eight of the 831 students attending Bicentennial Junior High came from Crichton Park, Hawthorn and Bicentennial Elementary. Two hundred and thirty-nine students did not have their elementary school recorded and the remaining 124 came from other elementary schools.

Appendix B - Source of Students shows more detail of where the students came from.

2.5. Last Year Attended

The information about the last school and year attended by each of the students showed that they went to 67 different schools. For 125 of these students, the Junior High School is shown as the last school attended with one additional student still attending in 2011-12. A great majority of the students show Dartmouth High School as the last school attended with 1,143 of them attending that school. Two hundred and forty-six of the John Martin students and 214 of the Bicentennial students are still attending school.

Appendix D - Last School and Year Attended shows more detail for these students.

2.6. Dropout Rates

For many years, schools have been reporting the number of students who were enrolled on September 30 and withdrew prior to the end of the school year.³ In the absence of a direct drop-out rate, this student withdrawal information has been used by some as a proxy dropout indicator. Others have used the Grade 12 non-graduation rate as a dropout indicator. Another dropout indicator has been calculated by looking at the students in Grade 9 who have not graduated within three years. None of these rates are good indicators of the number of students who actually drop out of school. The Nova Scotia Department of Education does not define a dropout rate and does not publish any statistics that could be used as dropout rates.

For purposes of this report, using the information provided for the 1,604 students, dropouts are defined as any student:

- whose age was 15 and over in the last year in school, and
 - is not attending school
 - has not graduated
 - has not transferred to an educational facility outside of the Nova Scotia public education system.

Dropout rate is calculated as the number of dropouts divided by the sum of students still attending school, graduated students and dropouts.

2.7. Transferred Students

As noted above, 175 records showed that 175 students had transferred to another institution prior to graduating from high school. Out of these 93 were shown as transfers within the board or within Nova Scotia and 34 where the destination was unknown. Since each student is assigned a unique student ID number, then there should have been a continuation of the student's record for all students that stayed in the Nova Scotia public education system. The following are possible reasons for no follow-up record:

- student has dropped out of school rather than transferred
- student has transferred out of the public system, e.g. home schooling, moved to another province
- student has been issued another ID number
- leaving description has been reported incorrectly
- planned description has been reported incorrectly

³ These numbers do not include students who complete a year but do not return the following year.

Staff at the Department of Education have very stringent quality control procedures on all data reported and make every effort to minimize issue of duplicate student IDs and ensure year over year record continuity.

Students reported as internal transfers were coded in two groups - under age 15 and 15 and over. Since the reported ages are as of September 30 of the academic year, the second group would be 16 or over in the following year and therefore legally able to quit school. These internal transfers were counted as dropouts for the purposes of this report. Students who were coded as going to another province, home schooling, or internal transfers under the age of 15 were excluded from the calculation of the dropout rate.

2.8. Education Outcomes

For the 1,604 students, the last year in school included a Leaving Description and Planned Description. This information was used, as described in Appendix A - Data Coding and Cleaning, to develop the latest status of each student as well as their planned intentions following graduation. Out of the 1,604 students, 460 were attending school in 2011-12, 642 had graduated, 118 were deemed to have an indeterminate status and 384 had dropped out. Appendix C - Student Status provides considerable detail on the status of students for each of the junior high schools as well as the six major feeder schools and those with an "Unknown Elementary School". This last is provided because of the relatively large number of students involved. Over two thirds of these students have a postal code beginning with B3A associated with their record. The B3A Forward Sortation Area (FSA) covers a large part of Dartmouth North.

As shown in Appendix F, virtually all of the students from 2003-04 and 2004-05 and most of the students from 2005-06 have completed their secondary education. Most of the students from 2006-07 to 2008-09 were still in school in 2011-12. This overview of education outcomes is based on the 2003-04 to 2005-06 period. In addition to the two schools with very high dropout rates, the differences among the schools provide a perspective that needs further research and understanding.

John Martin's dropout rate increased from 44% for students from 2003-04 to 49% for students from 2004-05. It is likely that the dropout rate for students from 2005-06 will exceed 50%⁴. These rates are more than double those of Bicentennial Junior High students. For students from 2003-04 and 2004-05, approximately 50%

⁴ If one third of the students currently attending drop out, then the dropout rate would be 50%.

of the students have graduated from John Martin compared to almost 80% for Bicentennial.

For the elementary schools, the contrasts in education outcomes is even greater. For the rest of this section references to years are the academic years that students were first shown to be in either John Martin or Bicentennial Junior High. Students that came from Harbourview Elementary had a dropout rate of 44% for 2003-04 and 2004-05. It is likely that the dropout rate will be at least 43%⁵ for 2005-06. This contrasts with John MacNeil, Crichton Park and Hawthorn who all have dropout rates much closer to 10%. Graduation rates in the 50% range for Harbourview also contrast with graduation rates of 80% and higher at these other schools. The recent achievement test results shown in the previous report suggest that high dropout rates may continue to be a problem for some of the schools.

The John MacNeil education outcomes are much more favourable than might be expected based on the assessment test results. This dichotomy is one of the factors that should be explored. It is noted that in 2006-07, John MacNeil had a fairly high number of students older than the most common age of students in each grade. Did this mean that John MacNeil gave priority to mastery of subject material rather than advancing students with their peer age group? Was this a factor in the more favourable education outcomes? What other dynamics, demographic or systemic, might have contributed to these results?

2.9. After Graduation

Graduating students are asked to provide their planned intentions for work or further education following graduation. Out of the 642 students who have graduated, 536 provided this information with over 344 of them planning to go to university in Nova Scotia. Another 116 planned to go to Community College pretty much equally split between within Nova Scotia and in another province.

Appendix E - Intentions after Graduation shows more detail on post-graduation plans for each of the two junior high schools, the six key feeder schools and by last year in school. The differences of intentions among the various schools is interesting. For example, 67% of students from Bicentennial plan to go to university compared to 30% for John Martin. Similarly over 75% of students from Crichton Park plan to go to university compared to 32% for Harbourview. Demographic circumstances as well as school culture probably contribute to these differences.

⁵ If one third of the currently attending students drop out of school, then the rate will be just over 43%.

3. OBSERVATIONS

As shown in the original report, a number of education indicators document that students from Dartmouth North are not achieving at the same level as other students in HRM. Graduation rates are lower, senior high school withdrawal rates are higher and the number of students dropping out, or at risk of dropping out, are at levels that cause concern. Based on the information in the report, it was concluded that a large part of Dartmouth North meets the basic eligibility requirement of a 40% dropout rate for the Pathways program.

The Nova Scotia Department of Education provided information that tracks individual students. Using this information, it has been possible to calculate more accurate dropout rates for students from John Martin Junior High and Bicentennial Junior High. Students from John Martin Junior High and those that came from Harbourview Elementary have dropout rates well over 40% and some approaching 50%. Considering overall performance levels at schools such as Dartmouth High School masks the significant underlying differences of the various feeder schools.

The Minister's Report to Parents and Guardians expresses a concern about too many kids being on Individual Program Plans (IPPs). In the critical first years of school where it has become apparent that we are losing our children in these basic years, we continue to see a disproportionate number of our students in IPPs. Are these helpful or do they contribute to the low achievement and outcome levels of our schools?

There is a strong need for comprehensive research aimed at understanding and exploring the issues raised in the two Dartmouth North Association reports on the education results of students from Dartmouth North. The issues and challenges are beyond the ability of either the community or a single school to handle. A system level response should include both provincial and municipal participation in the acknowledgement and recognition of needed social and community supports for students and their families. Pathways to Education is one of several supports to be pursued. Schools Plus is viewed as an essential service for these schools, and other program expansions such as after-school physical activity grants should be considered.

The Department of Education, the Halifax Regional School Board, Dartmouth High and schools make considerable efforts to measure and report achievement tests results of students. There seems to be honest concern about the overall system level results. There also seems to be a recognition for the need to take action at the individual school level. None of these groups measure, or even define, dropout

rates. One of the most important measures of student success, and a current minimum standard, is the High School Graduation Certificate. Statistics Canada's Census of Population provides the only publically available measures on what percentage of a population have not achieved Grade 12 certification. These are not very helpful when trying to assess and manage appropriate programs and interventions at local schools. Test assessment results, which exclude the most vulnerable populations, seem to be the performance measure of choice.

All parts of the system, either do not know, or worse, do not want to know, the real success rate of our schools - the graduation rate of all students with sufficient skills and knowledge to pursue further education or to take a productive role in the workforce. The focus on dropouts and those at risk of dropping out should be seen as an opportunity to target resources where they are most needed. The extent, locale and dynamics of these students must be understood if real progress is to be made. The Pathways to Education initiative has clearly demonstrated the value of working among vulnerable communities with interventions that have reduced dropouts by up to 70% and increased post-secondary participation by up to 300%.

The two reports prepared for the Dartmouth North Association will be used to raise awareness of the reality and depth of concerns facing parents and guardians in Dartmouth North. The reports are intended to encourage dialogue among key partners involved in all aspects of the education experience of our children.

In addition to continuing to work on the Pathways application, the dialogue to get to the bottom of these outcomes and come up with a plan to turn this around must be started.

4. APPENDIX A - DATA CODING AND CLEANING

The Provincial Student Module (PSM) maintained by the Nova Scotia Department of Education was used to provide information for the 1,604 students who attended John Martin or Bicentennial Junior High Schools at any time from 2003-04 to 2008-09. As with any data reporting system, there can be incomplete, inconsistent, or incorrect reporting of some elements. This is especially true where record integrity depends upon a wide variety of people and working environments collecting and reporting the information over a period of time. For the above time period, reporting was at the school level and used a variety of systems to report to the PSM. In spite of this, the data was overall very good. For statistical analysis purposes, it is necessary to ensure that data is complete and is in a form that allows statistical information to be generated. At the same time, it is imperative that the integrity of the overall data not be compromised.

The following sections show the approach that was taken to prepare the data for analysis purposes.

4.1. Status and Future Plans

The data included information on Leaving Description and Planned Description. There were many blanks and some inconsistencies in the data. Two columns were added ("Status" and "Plans") and were coded as follows:

- Students in school in 2011/12 and not withdrawn (464 records):
 - Status - Attending school, Plans - not applicable, transfers as reported
 - 4 Returning Graduates were given a status of graduated with three shown as attending school and one, who had withdrawn, as unknown under Plans.
- Students in school in 2011/12 and withdrawn (31 records):
 - as reported, with blank plans coded as unknown.
- Students whose last year in school was 2010/11 or earlier and leaving description is blank (79 records):
 - Status - "Unknown 15 and over" or "Unknown LT 15 years" depending on age of student as of September 30 of last year attended. Plans - as reported or unknown.
- Leaving Description reported as graduated (625 records)
 - Status - Graduated, Plans - as reported (623 cases) or unknown (2 cases)

- Leaving Description reported as Withdrew (232 records)
 - Status - Withdrew, except Returning Graduates coded as Graduated (5 cases), Plans - as reported or unknown
- Leaving Description reported as Medical Withdraw , Not Completed or Suspended (24 records)
 - Status - as reported, Plans - as reported or unknown
- Leaving Description reported as Transferred (175 records)
 - Status - A number of factors were used to code these records
 - Transfer to Other training or educational facility - for all planned descriptions that indicated a transfer outside the Nova Scotia public education system, e.g. another province, Community College, private education. Three cases of students shown as enrolled in 2011 and transferred were coded as Still Attending.
 - Transferred 15 and over or Transferred LT 15 years - depending on age of student as of September 30 of last year attended. All of these students had a leaving description of transferred within the board (85 cases), transferred within NS (8 cases), Unknown (19 cases) or blank (15 cases) but had no further record of schooling within the Nova Scotia public education system.
 - Plans - as reported or unknown

4.2. Other Coding

Additional coding was done to assist with summarization and reporting order of various elements.

Last known elementary school:

- Blanks were coded as "Elementary School Unknown"
- Any school with less than 5 students attending John Martin or Bicentennial was coded as "Other Elementary School"
- All others as reported

Last year in school:

- Any junior high school with less than 5 students was coded as "Other Junior High"
- Any senior high school with less than 5 students was coded as "Other Senior High"
- Any indeterminate school (4 cases) was coded as "Other School"
- All others as reported

5. APPENDIX B - SOURCE OF STUDENTS

School	Number of New Students by Academic Year													
	JOHN MARTIN JUNIOR HIGH							BICENTENNIAL						
	03/04	04/05	05/06	06/07	07/08	08/09	Total	03/04	04/05	05/06	06/07	07/08	08/09	Total
Elementary School Unknown	180	13	25	5	7	5	235	207	10	7	5	6	4	239
HARBOUR VIEW	36	35	42	38	33	42	226	7	7	1			1	16
JOHN MACNEIL		23	32	27	29	20	131		2	1			1	4
SHANNON PARK	4	7	9	9	6	8	43		4		1	1		6
BICENTENNIAL			1		3	1	5		22	18	17	22	13	92
CRICHTON PARK					1		1	76	48	33	46	34	31	268
HAWTHORN								43	15	10	26	7	7	108
ADMIRAL WESTPHAL ELEM SCHOOL	2		2			2	6							
ALDERNEY					1		1		2			2		4
BEL AYR			2		2		4		1					1
BELL PARK ACADEMIC CENTRE		1		1	1	3	6						1	1
BROOKHOUSE	1				4		5							
HALIFAX HOME SCHOOL		1					1	3	3					6
IAN FORSYTH			1	2	1	3	7					1		1
NORTHBROOK	1						1	25						25
SEASIDE ELEMENTARY	1		4		1		6				1			1
SOUTHDALE-NORTH														
WOODSIDE	1	1	1	2	3	2	10		1	4	2			7
ST. PATRICK'S-ALEXANDRA				2			2		1		3			4
Other Elementary School	4	5	22	18	14	20	83	3	11	8	10	6	10	48
Total	230	86	141	104	106	106	773	364	127	82	111	79	68	831

Notes:

1. Other Elementary School includes all those schools with less than 5 students attending John Martin or Bicentennial
2. 2003/04 was the first year information was available, prior elementary school was unknown for most of these students.
3. All students at either of the schools in 03/04 were considered new for these statistics.

Source: Nova Scotia Department of Education Provincial Student Module, custom tabulation

6. APPENDIX C - STUDENT STATUS

Status as of School Year 2011/12	JOHN MARTIN JUNIOR HIGH							BICENTENNIAL						
	03/04	04/05	05/06	06/07	07/08	08/09	Total	03/04	04/05	05/06	06/07	07/08	08/09	Total
Attending School	7	2	18	65	70	84	246		3	9	81	62	59	214
Graduated	111	39	47	6	5		208	277	97	50	7	3		434
Transfer to Other training or educational facility	8	2	14	4	3	3	34	3	4	1	1	3		12
Transfer (Less than 15 years of age)	7	2	3	5			17	6	1	4	9	3	1	24
Unknown (Less than 15 years of age)	5	2	5	3	4	5	24	3		1		1	2	7
Withdrew	63	24	27	13	13	11	151	37	14	10	6	5	4	76
Transfer (15 years of age and over)	22	8	19	5	6		60	14	5	1	3		1	24
Unknown (15 years of age and over)	4	6	4	3	5	3	25	13	2	2	4	2	1	24
Not Completed	2		4				6	9		4				13
Medical Withdraw	1	1					2	1						1
Suspended							0	1	1					2
Sub-total Dropouts	92	39	54	21	24	14	244	75	22	17	13	7	6	140
Total	230	86	141	104	106	106	773	364	127	82	111	79	68	831
Drop-out Indicators														
Attending School	7	2	18	65	70	84	246	0	3	9	81	62	59	214
Graduated	111	39	47	6	5	0	208	277	97	50	7	3	0	434
Drop-outs	92	39	54	21	24	14	244	75	22	17	13	7	6	140
Total	210	80	119	92	99	98	698	352	122	76	101	72	65	788
Percentages														
Attending School	3.3	2.5	15.1	70.7	70.7	85.7	35.2	0.0	2.5	11.8	80.2	86.1	90.8	27.2
Graduated	52.9	48.8	39.5	6.5	5.1	0.0	29.8	78.7	79.5	65.8	6.9	4.2	0.0	55.1
Drop-outs	43.8	48.8	45.4	22.8	24.2	14.3	35.0	21.3	18.0	22.4	12.9	9.7	9.2	17.8

Academic Year Students Entered Junior High

Status as of School Year 2011/12	Came from HARBOURVIEW							Came from JOHN MACNEIL						
	03/04	04/05	05/06	06/07	07/08	08/09	Total	03/04	04/05	05/06	06/07	07/08	08/09	Total
Attending School	3	2	8	29	28	34	104			5	22	23	21	71
Graduated	19	21	18	1			59	18	17			1		36
Transfer to Other training or educational facility			1	1	1	1	4			1	1			2
Transfer (Less than 15 years of age)	2			1			3				1	1		2
Unknown (Less than 15 years of age)	2	1	1	1	2	3	10	6	7	3	3			19
Withdrew	11	10	7	4	1	5	38		1					1
Transfer (15 years of age and over)	4	4	6	1	1		16	1				1		2
Unknown (15 years of age and over)	2	4	2				8		2					2
Not Completed							0							0
Medical Withdraw							0							0
Suspended							0							0
Sub-total Dropouts	17	18	15	5	2	5	62	1	3	0	1	0		5
Total	43	42	43	38	33	43	242	25	33	27	29	21		135
Drop-out Indicators														
Attending School	3	2	8	29	28	34	104		0	5	22	23	21	71
Graduated	19	21	18	1	0	0	59	18	17	0	1	0		36
Drop-outs	17	18	15	5	2	5	62	1	3	0	1	0		5
Total	39	41	41	35	30	39	225	19	25	22	25	21		112
Percentages														
Attending School	7.7	4.9	19.5	82.9	93.3	87.2	46.2		0.0	20.0	100.0	92.0	100.0	63.4
Graduated	48.7	51.2	43.9	2.9	0.0	0.0	26.2	94.7	68.0	0.0	4.0	0.0		32.1
Drop-outs	43.6	43.9	36.6	14.3	6.7	12.8	27.6	5.3	12.0	0.0	4.0	0.0		4.5

Academic Year Students Entered Junior High

Status as of School Year 2011/12	Came from Shannon Park							Came from Bicentennial Elem						
	03/04	04/05	05/06	06/07	07/08	08/09	Total	03/04	04/05	05/06	06/07	07/08	08/09	Total
Attending School		1	1	8	4	6	20		2	4	16	24	12	58
Graduated	2	6	5		1		14	14	10					24
Transfer to Other training or educational facility			1			2	3	1						1
Transfer (Less than 15 years of age)		1		1			2		1				1	2
Unknown (Less than 15 years of age)	1		1				2							0
Withdrew	1	3			1		5	2	2	1	1	1	1	7
Transfer (15 years of age and over)				1	1		2	2						2
Unknown (15 years of age and over)							0	1						1
Not Completed			1				1		2					2
Medical Withdraw							0							0
Suspended							0							0
Sub-total Dropouts	1	3	1	1	2	0	8	5	4	1	1	1	1	12
Total	4	11	9	10	7	8	49	22	19	17	25	14	97	
Drop-out Indicators														
Attending School	0	1	1	8	4	6	20	2	4	16	24	12	12	58
Graduated	2	6	5	0	1	0	14	14	10	0	0	0	0	24
Drop-outs	1	3	1	1	2	0	8	5	4	1	1	1	1	12
Total	3	10	7	9	7	6	42	21	18	17	25	13	13	94
Percentages														
Attending School	0.0	10.0	14.3	88.9	57.1	100.0	47.6	9.5	22.2	94.1	96.0	92.3	92.3	61.7
Graduated	66.7	60.0	71.4	0.0	14.3	0.0	33.3	66.7	55.6	0.0	0.0	0.0	0.0	25.5
Drop-outs	33.3	30.0	14.3	11.1	28.6	0.0	19.0	23.8	22.2	5.9	4.0	7.7	7.7	12.8

Academic Year Students Entered Junior High

Status as of School Year 2011/12	Came from CHRICHTON PARK							Came from HAWTHORN						
	03/04	04/05	05/06	06/07	07/08	08/09	Total	03/04	04/05	05/06	06/07	07/08	08/09	Total
Attending School			3	36	33	31	103			3	23	6	6	38
Graduated	68	44	27				139	37	15	5				57
Transfer to Other training or educational facility		1	1		1		3	1						1
Transfer (Less than 15 years of age)	1			6			7			1				1
Unknown (Less than 15 years of age)	1		1				2						1	1
Withdrew	2	3		2	1		8	3		1	1	1		6
Transfer (15 years of age and over)	1						1	1			1			2
Unknown (15 years of age and over)				2			2	1			1			2
Not Completed	3		1				4							0
Medical Withdraw							0							0
Suspended							0							0
Sub-total Dropouts	6	3	1	4	1	0	15	5	0	1	3	1	0	10
Total	76	48	33	46	35	31	269	43	15	10	26	7	7	108
Drop-out Indicators														
Attending School	0	0	3	36	33	31	103	0	0	3	23	6	6	38
Graduated	68	44	27	0	0	0	139	37	15	5	0	0	0	57
Drop-outs	6	3	1	4	1	0	15	5	0	1	3	1	0	10
Total	74	47	31	40	34	31	257	42	15	9	26	7	6	105
Percentages														
Attending School	0.0	0.0	9.7	90.0	97.1	100.0	40.1	0.0	0.0	33.3	88.5	85.7	100.0	36.2
Graduated	91.9	93.6	87.1	0.0	0.0	0.0	54.1	88.1	100.0	55.6	0.0	0.0	0.0	54.3
Drop-outs	8.1	6.4	3.2	10.0	2.9	0.0	5.8	11.9	0.0	11.1	11.5	14.3	0.0	9.5

Academic Year Students Entered Junior High

Status as of School Year 2011/12	Came from Unknown Elementary School						Total
	03/04	04/05	05/06	06/07	07/08	08/09	
Attending School	4		1	1	4	5	15
Graduated	234	6	8	2	3		253
Transfer to Other training or educational facility	10	2	7	3	1		23
Transfer (Less than 15 years of age)	10	2	2	2	2		18
Unknown (Less than 15 years of age)	3	1	1		2	2	9
Withdrew	77	4	5	1	1	1	89
Transfer (15 years of age and over)	28	6	6	1		1	42
Unknown (15 years of age and over)	11	1	2				14
Not Completed	7						7
Medical Withdraw	2						2
Suspended	1	1					2
Sub-total Dropouts	126	12	13	2	1	2	156
Total	387	23	32	10	13	9	474
Drop-out Indicators							
Attending School	4	0	1	1	4	5	15
Graduated	234	6	8	2	3	0	253
Drop-outs	126	12	13	2	1	2	156
Total	364	18	22	5	8	7	424
Percentages							
Attending School	1.1	0.0	4.5	20.0	50.0	71.4	3.5
Graduated	64.3	33.3	36.4	40.0	37.5	0.0	59.7
Drop-outs	34.6	66.7	59.1	40.0	12.5	28.6	36.8

Dropouts are defined as students who are 15 years of age and over in their last year in school and:

1. are not currently in school
2. have not transferred to another out of province or private educational facility
3. have not graduated

7. APPENDIX D - LAST SCHOOL AND YEAR ATTENDED

Last School	JOHN MARTIN JUNIOR HIGH										BICENTENNIAL									
	Last Year Attended										Last Year Attended									
	03/04	04/05	05/06	06/07	07/08	08/09	09/10	10/11	11/12	Total	03/04	04/05	05/06	06/07	07/08	08/09	09/10	10/11	11/12	Total
JOHN MARTIN JUNIOR HIGH	17	7	19	11	17	8	4	1	1	85						1				1
BICENTENNIAL											11	6	3	11	6	1	1	1		40
DARTMOUTH HIGH			10	40	63	54	58	54	183	462	2		9	93	102	126	107	61	181	681
PRINCE ANDREW HIGH				1	2	4	5	5	17	34			1		1	4	4	1	12	23
CITADEL HIGH					2	4	3	3	5	17					4		3		2	9
COLE HARBOUR DISTRICT HIGH					5	4	2	2	4	17				2	1	2			3	8
FLEXIBLE LRNG & EDUC CENTRES					1				17	18						1	1		8	10
AUBURN DRIVE HIGH SCHOOL			1		2	1	3	2	7	16					3		1		1	5
HALIFAX WEST HIGH				2		2		1	3	8				1			2	1	3	7
J. L. ILSLEY HIGH SCHOOL					1	1	2	5	9								1	1	2	4
CHARLES P. ALLEN				2		1	1	2	4	10							1	1		2
LOCKVIEW HIGH				1	1				2	4				1		1		2	3	7
MILLWOOD HIGH					2	3		1	2	8				1		1				2
EASTERN SHORE DISTRICT HIGH				1	1	1	1	1	1	6								1	2	3
SACKVILLE HIGH				1		1			4	6					1	1				2
COBEQUID EDUCATIONAL CENTRE					1	2	2	2	7											
AMHERST HIGH SCHOOL	1			1		1	1	1	5				1							1
HORTON HIGH					1		1		2					1					2	3
Other Senior High		1		6	2	4	4	9	12	38				2		1	2	2	5	12
Other Junior High	2	1	2	8	2	2	3			20	1	2	1		1	1	2			8
Other School									1	1							2		1	3
Total	20	9	32	74	101	92	89	86	270	773	14	8	14	112	120	140	127	71	225	831

Note: All those schools with less than 5 students from either John Martin or Bicentennial are grouped as shown above.

Source: Nova Scotia Department of Education Provincial Student Module, custom tabulation

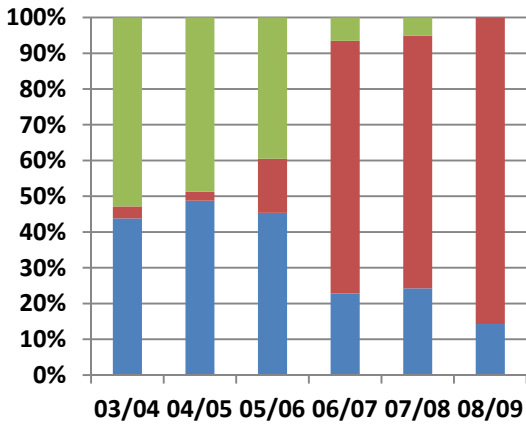
8. APPENDIX E - INTENTIONS AFTER GRADUATION

	JOHN MARTIN Junior High		BICENTENNIAL Junior High		Total									
	#	%	#	%	#	%								
Post Graduation Intentions														
Attending School	1	0.5	2	0.5	3	0.5								
University in NS	61	29.3	283	65.2	344	53.6								
University outside NS	2	1.0	6	1.4	8	1.2								
Community College in NS	29	13.9	28	6.5	57	8.9								
Community College outside of NS	28	13.5	31	7.1	59	9.2								
Other training or educational facility	14	6.7	18	4.1	32	5.0								
Workforce	18	8.7	18	4.1	36	5.6								
Unknown	55	26.4	48	11.1	103	16.0								
Total	208		434		642									
	Students From:		HARBOUR VIEW		JOHN MACNEIL		SHANNON PARK		BICENTENNIAL		CRICHTON PARK		HAWTHORN	
Post Graduation Intentions	#	%	#	%	#	%	#	%	#	%	#	%	#	%
University in NS	18	30.5	14	38.9	1	7.1	1	4.2	101	72.7	36	63.2		
University outside NS	1	1.7	1	2.8	7	50.0	13	54.2	4	2.9	1	1.8		
Community College in NS	7	11.9	7	19.4	0.0	0.0	8	5.8	7	5.0	1	1.8		
Community College outside of NS	4	6.8	5	13.9	1	7.1	2	8.3	7	5.0	1	1.8		
Other training or educational facility	8	13.6	1	2.8	1	7.1	4	16.7	3	2.2	4	7.0		
Unknown	16	27.1	6	16.7	1	7.1	1	4.2	12	8.6	6	10.5		
Workforce	5	8.5	2	5.6	1	7.1	1	4.2	4	2.9	2	3.5		
Total	59		36		14		24		139		57			
	Last year in School:		06/07		07/08		08/09		09/10		10/11		11/12	
Post Graduation Intentions	#	%	#	%	#	%	#	%	#	%	#	%	#	%
University in NS	73	66.4	67	49.6	81	52.9	78	57.4	45	43.3		0.0		
University outside NS	1	0.9	0.0	0.0	4	2.6	0.0	0.0	3	2.9		0.0		
Community College in NS	4	3.6	8	5.9	23	15.0	6	4.4	16	15.4		0.0		
Community College outside of NS	10	9.1	26	19.3	1	0.7	22	16.2	0.0	0.0		0.0		
Other training or educational facility	5	4.5	4	3.0	7	4.6	8	5.9	8	7.7		0.0		
Workforce	4	3.6	5	3.7	14	9.2	3	2.2	10	9.6		0.0		
Unknown	13	11.8	25	18.5	23	15.0	19	14.0	22	21.2	4	100.0		
Total	110		135		153		136		104		4			

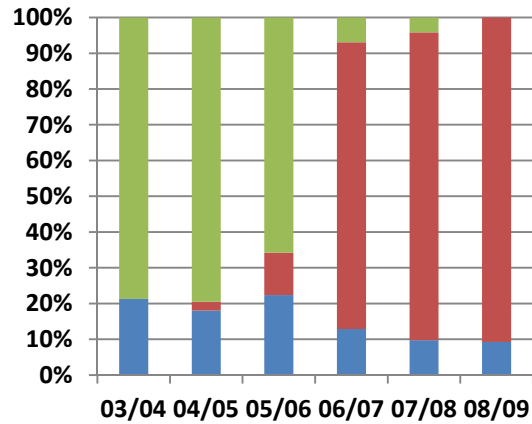
9. APPENDIX F - STUDENT STATUS GRAPHS

Student Status as of School Year 2011-2012

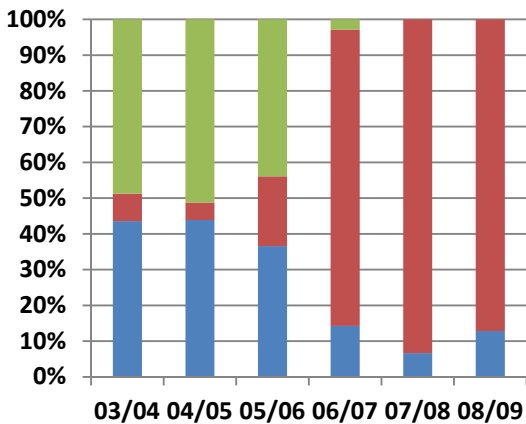
JOHN MARTIN JUNIOR HIGH



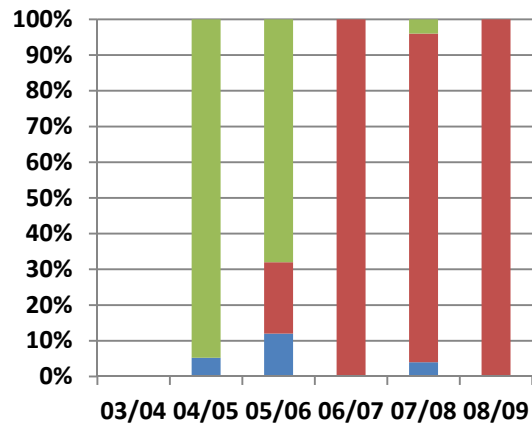
BICENTENNIAL JUNIOR HIGH



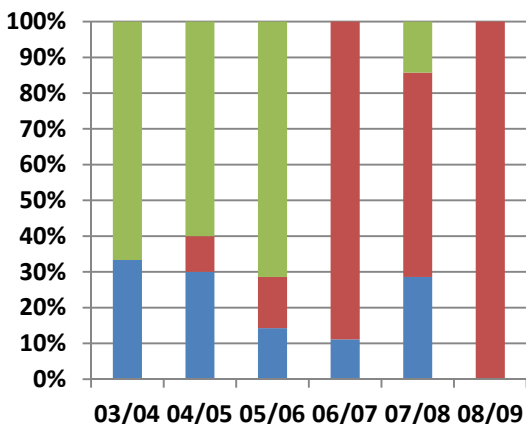
Came from HARBOURVIEW



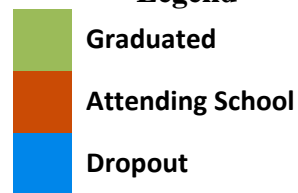
Came from JOHN MACNEIL



Came from SHANNON PARK

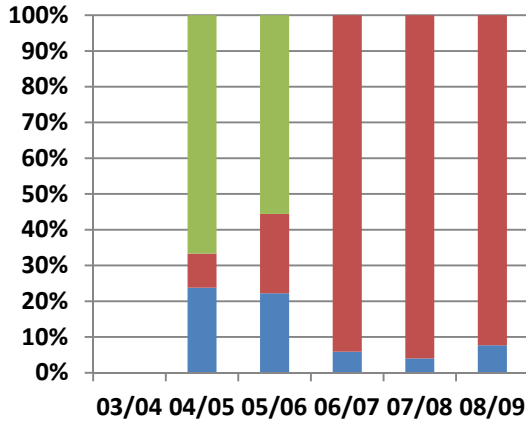


Legend

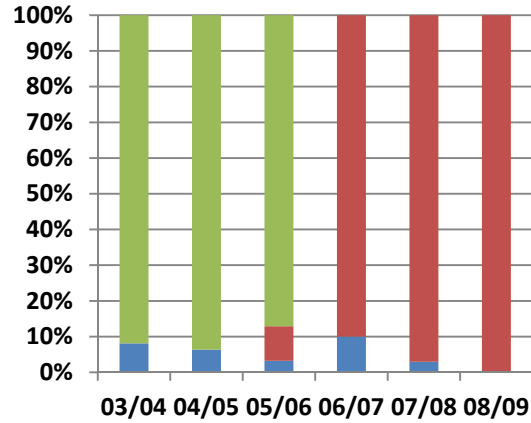


Student Status as of School Year 2011-2012

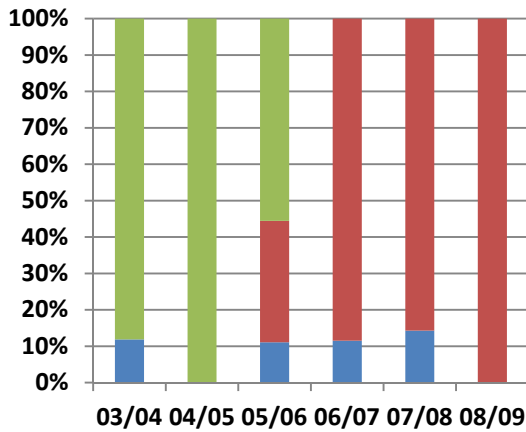
Came from BICENTENNIAL ELEMENTARY



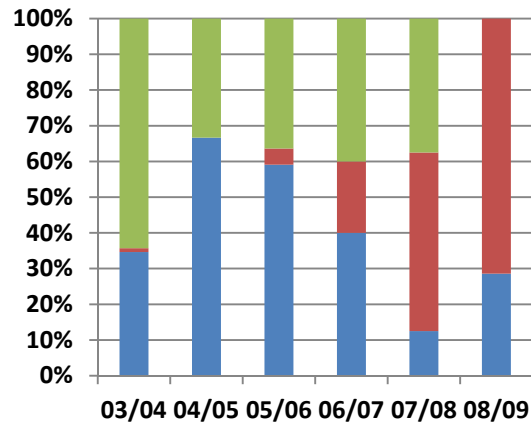
Came from CRICHTON PARK



Came from HAWTHORN



Came from Unknown Elementary School



Number of Students by Year

	03/04	04/05	05/06	06/07	07/08	08/09
John Martin JH	230	86	141	104	106	106
Bicentennial JH	364	127	82	111	79	68

Number of Students by Source School and Year

From School	03/04	04/05	05/06	06/07	07/08	08/09
Harbour View	43	42	43	38	33	43
John MacNeil		25	33	27	29	21
Shannon Park	4	11	9	10	7	8
Bicentennial Elem		22	19	17	25	14
Crichton Park	76	48	33	46	35	31
Hawthorn	43	15	10	26	7	7
Unknown Elem	387	23	32	10	13	9

Legend

